



GUILDFORD
B O R O U G H

www.guildford.gov.uk

Pedro Wrobel

Joint Chief Executive of Guildford and
Waverley Borough Councils

Dear Councillor

PLANNING COMMITTEE - WEDNESDAY 24 APRIL 2024

Please find attached the following:

Agenda No Item

9. **Presentations (Pages 1 - 44)**

Yours sincerely

Sophie Butcher, Democratic Services Officer

Encs

This page is intentionally left blank

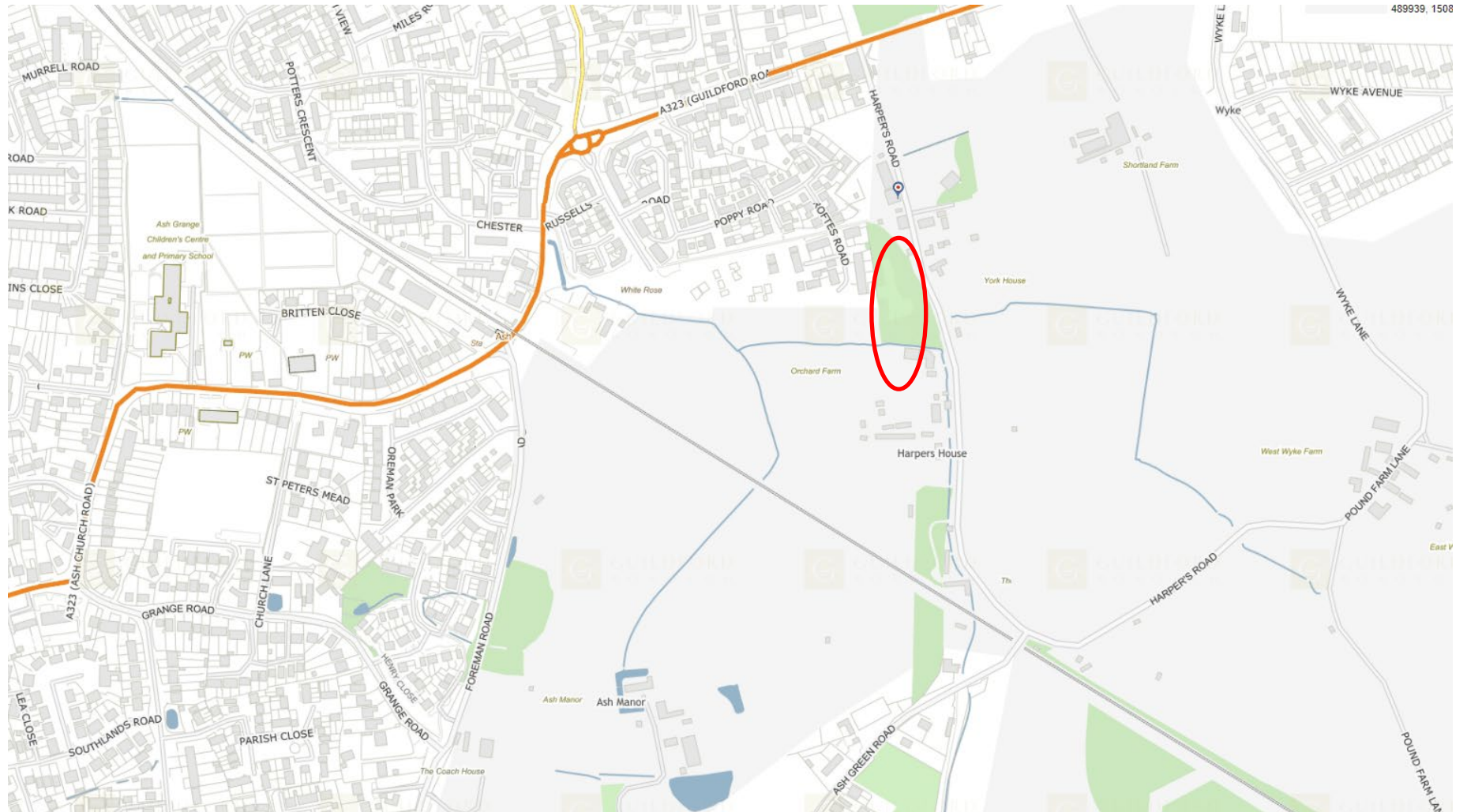
**23/P/01965 - Streamside,
Harpers Road,
Ash,
Guildford,
GU12 6DB**

[Previous](#)

[Next](#)

[Home](#)



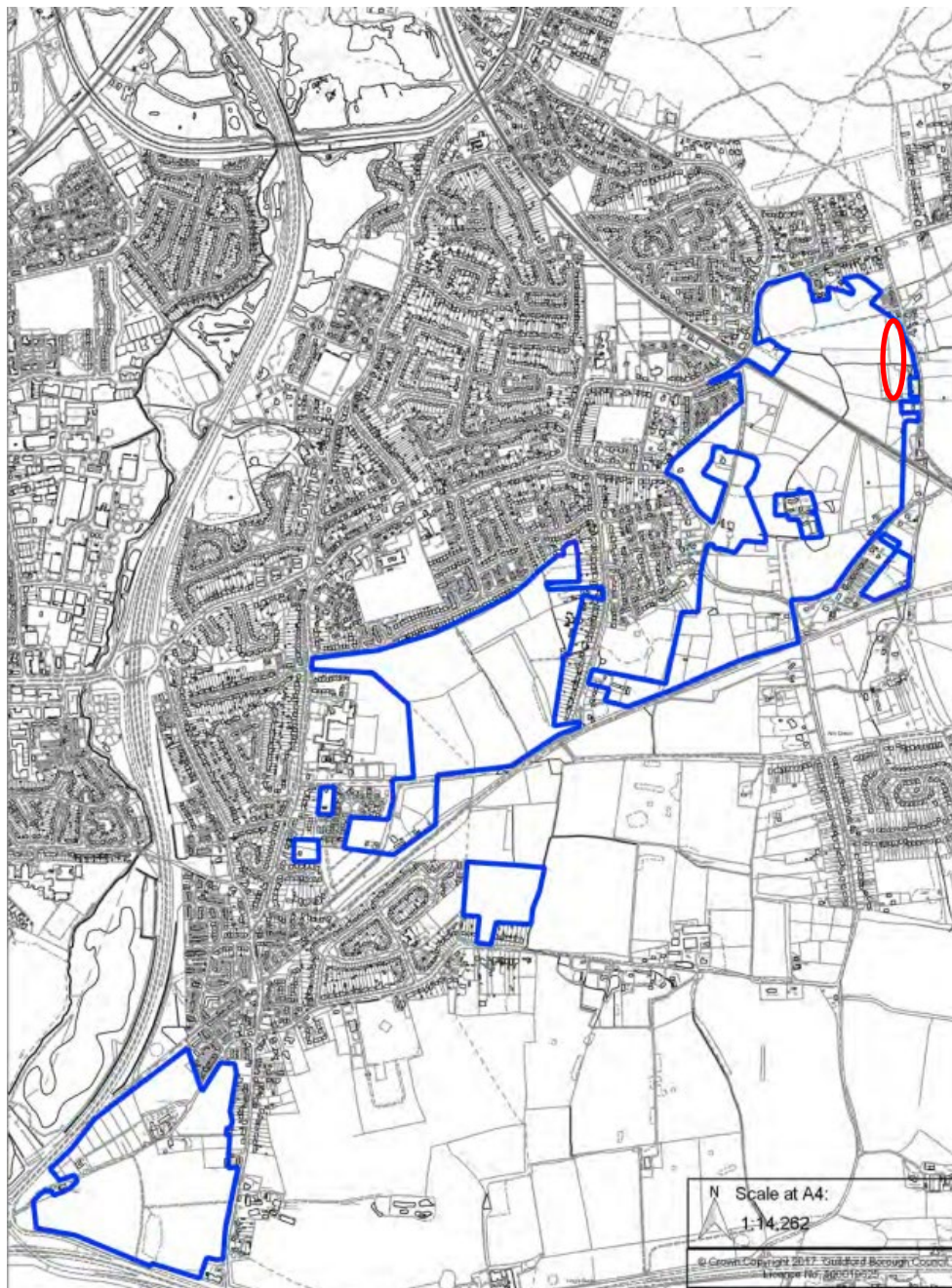


Wider Context

Previous

Next

Home



N Scale at A4:
1:14,262
© Crown Copyright 2017, VisitEngland, Ordnance Survey, British Crown Copyright, Ordnance Survey, 2017
Mapcode NW: 86211222

A31 Allocation

Previous

Next

Home





Consented Appeal Block Plan



Proposed Block Plan



Plot 24



Plot 18-19



Plot 9-10



Plot 1

The information on this page is for informational purposes only. It is not intended to be used as a contract or any other legal document.



Site Section AA



Street Elevation BB



Street Elevation CC



Street Elevation DD



Street Elevation EE



Northern Half of Site



Existing Dwelling and Southern Half of Site

[Previous](#)

[Next](#)

[Home](#)



This page is intentionally left blank

**23/P/02045 - Mandolay Hotel,
36-40 London Road,
Guildford,
GU1 2AF**

[Previous](#)

[Next](#)

[Home](#)



Site Location Plan

[Previous](#)

[Next](#)

[Home](#)

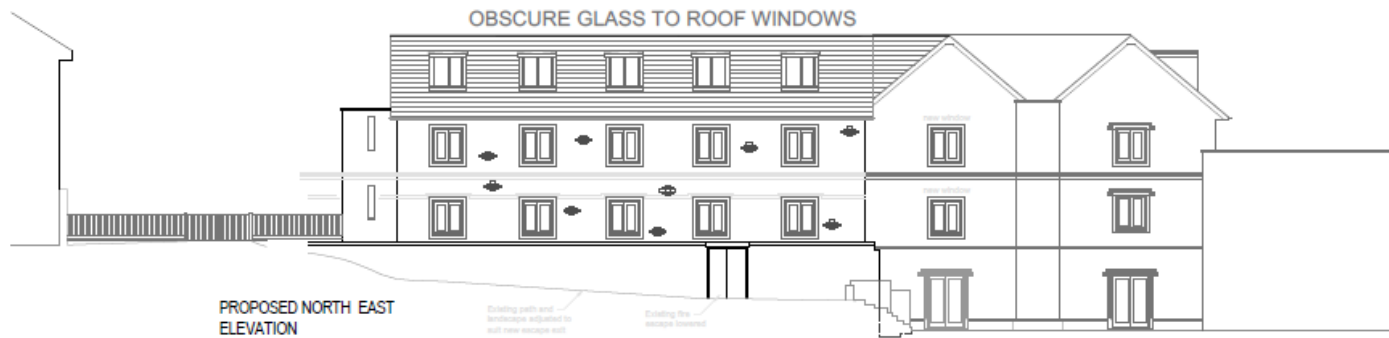
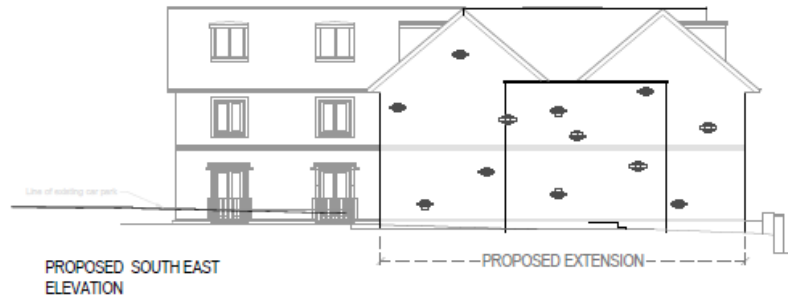


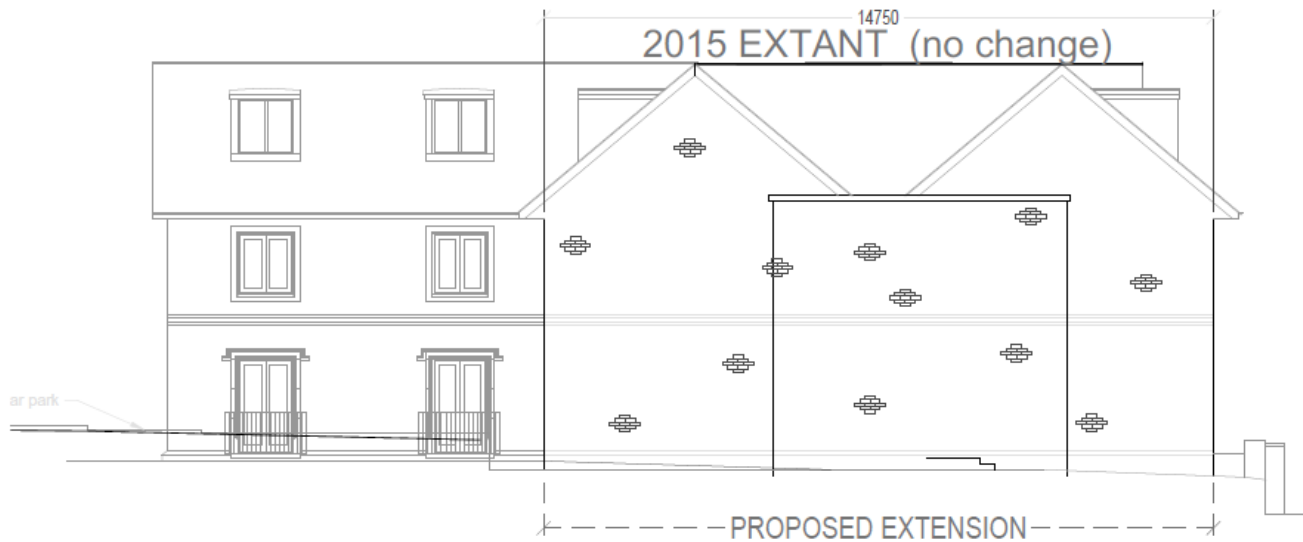
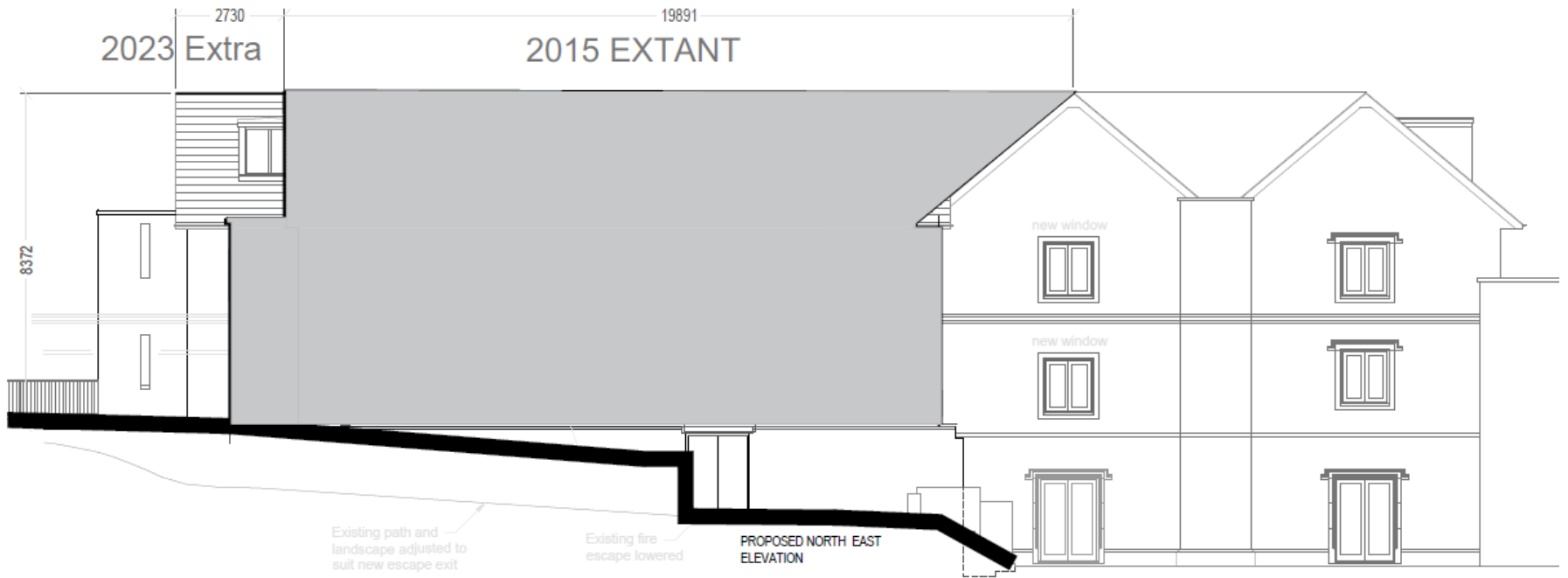
Block Plan

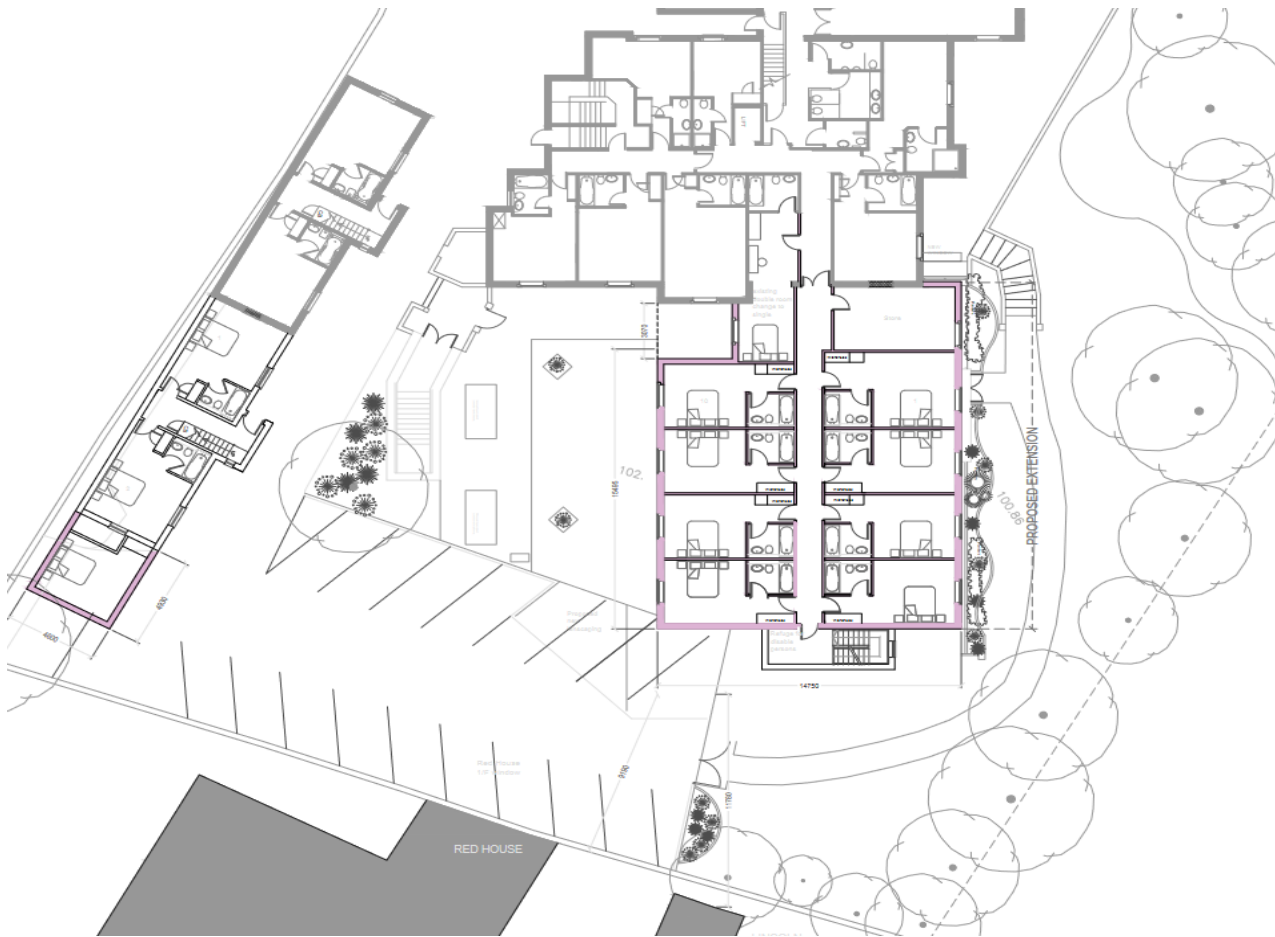
[Previous](#)

[Next](#)

[Home](#)





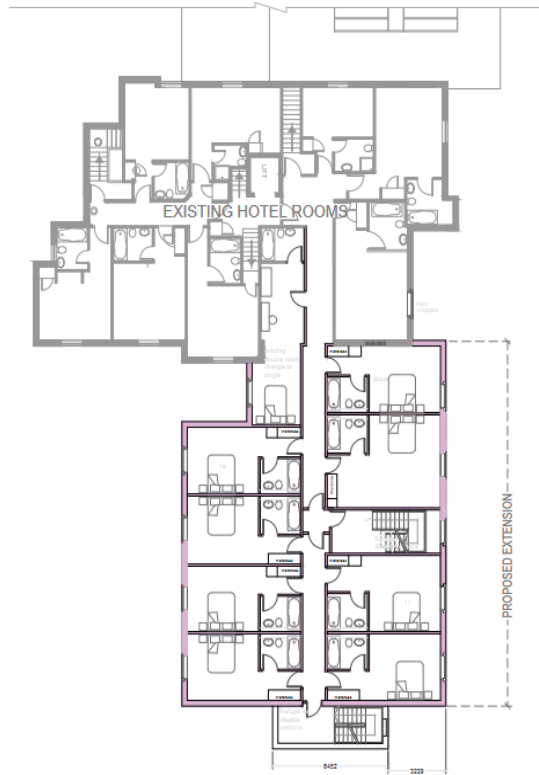


Proposed Ground Floor Plan of Hotel and Coach House

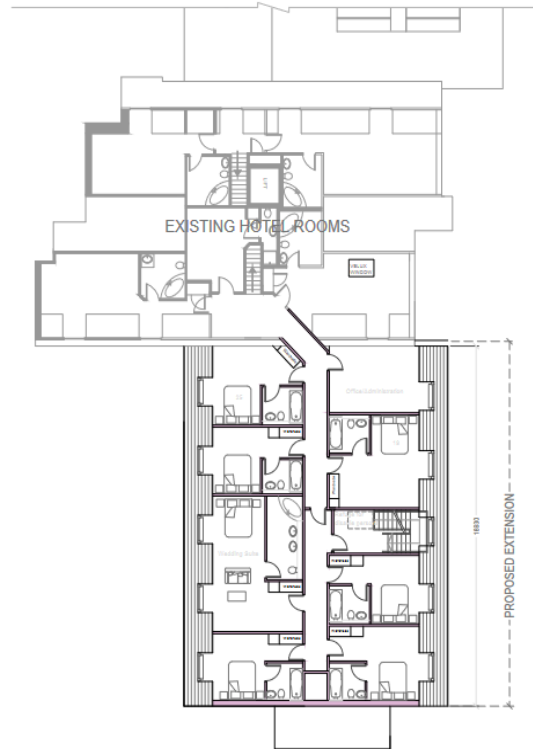
[Previous](#)

[Next](#)

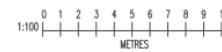
[Home](#)



PROPOSED FIRST FLOOR PLAN



PROPOSED SECOND FLOOR PLAN

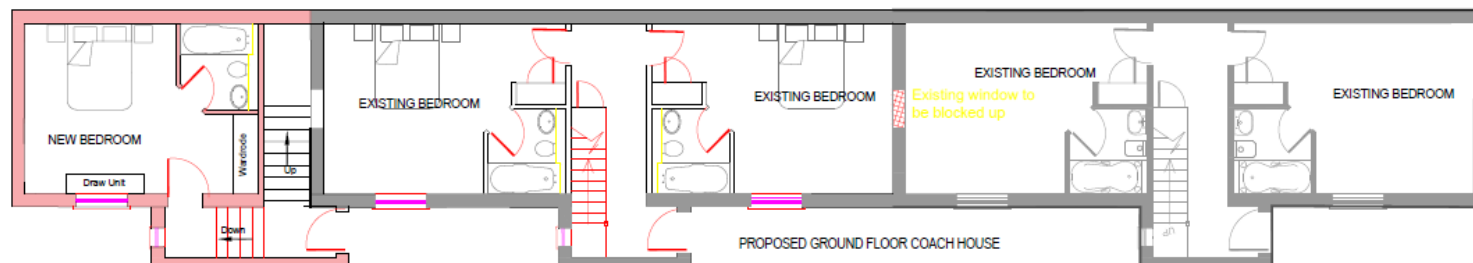
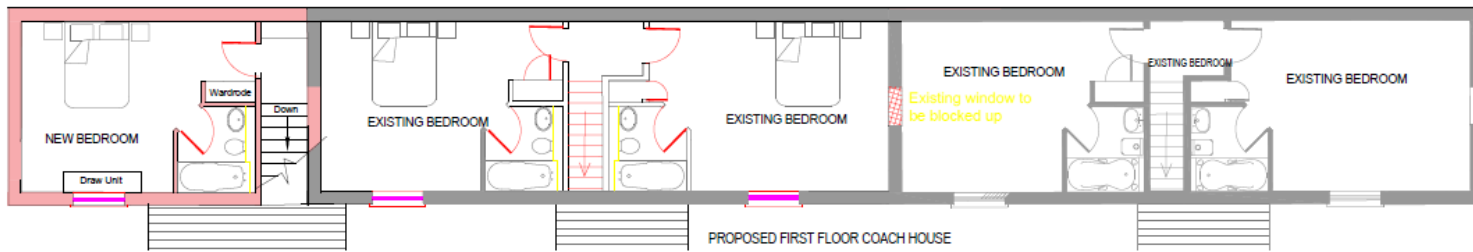
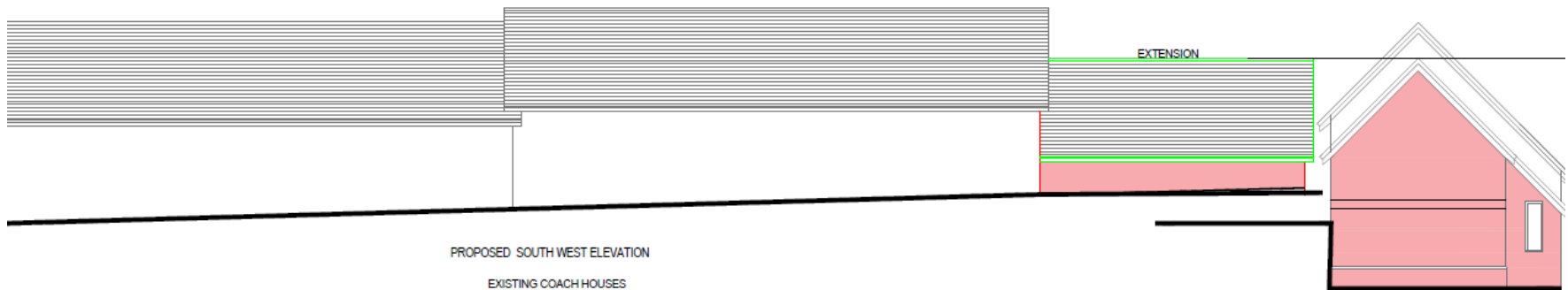


Proposed First and Second Floor Plans to Hotel

[Previous](#)

[Next](#)

[Home](#)



Proposed elevations and floor plans to Coach House

[Previous](#)

[Next](#)

[Home](#)



View of the rear of the Hotel

Previous

Next

Home



View of the rear of the Coach House

[Previous](#)

[Next](#)

[Home](#)



Screening along the boundary to Waterden Road adjacent to existing Hotel

[Previous](#)

[Next](#)

[Home](#)



View across site to rear of dwellings in Waterden Road from Car Park adjacent to Coach House

[Previous](#)

[Next](#)

[Home](#)



View of Lincoln House and Red House from the Car Park

[Previous](#)

[Next](#)

[Home](#)



View of Red House from the Hotel Car Park

[Previous](#)

[Next](#)

[Home](#)



Access viewed from rear of site between the Hotel and the Coach House

[Previous](#)

[Next](#)

[Home](#)



View of Mandolay Hotel from London Road

[Previous](#)

[Next](#)

[Home](#)



View of Mandolay Hotel looking towards Epsom Road

[Previous](#)

[Next](#)

[Home](#)



View of Mandolay Hotel from London Road looking towards Waterden Road

[Previous](#)

[Next](#)

[Home](#)



Block Plan

[Previous](#)

[Next](#)

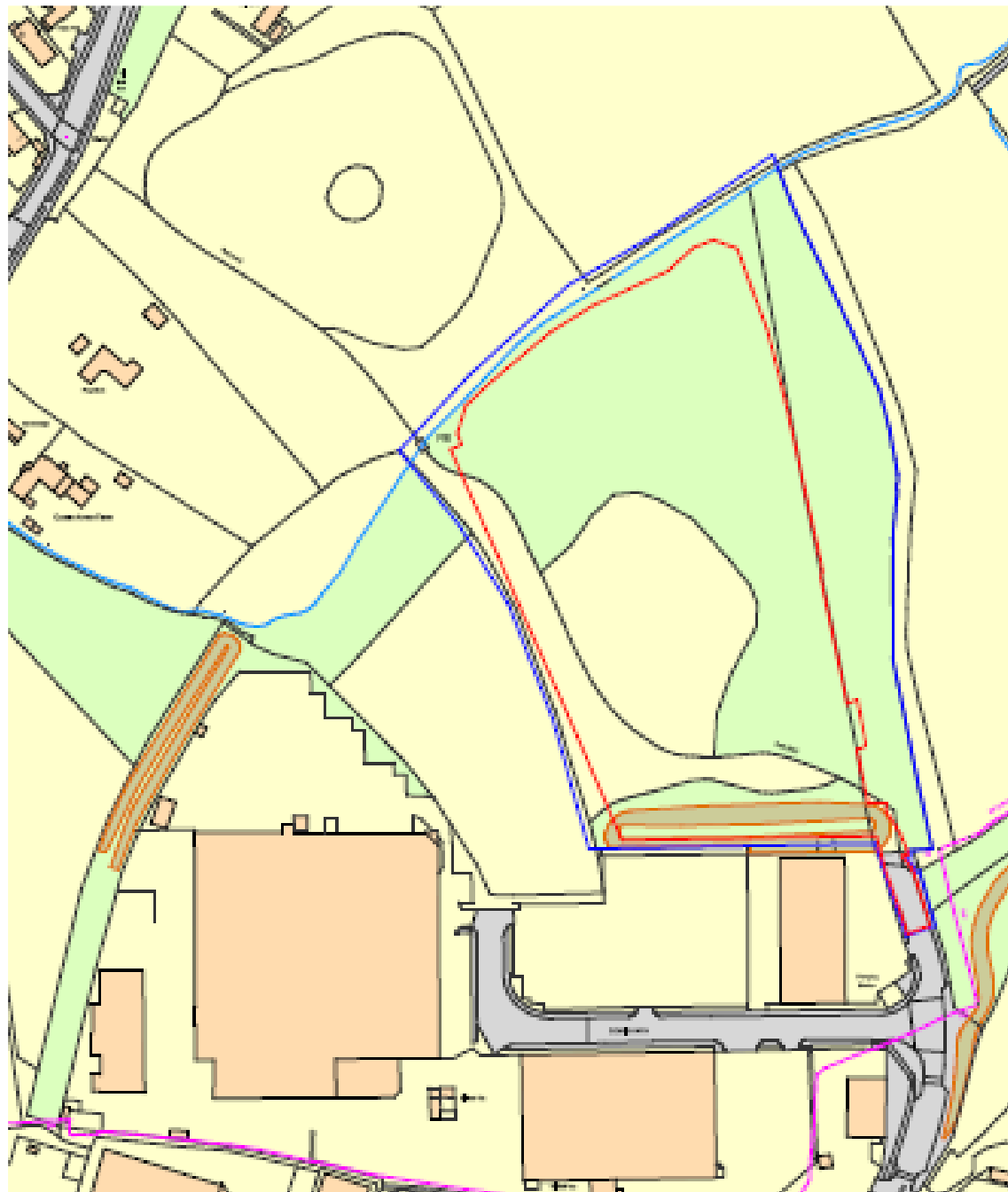
[Home](#)

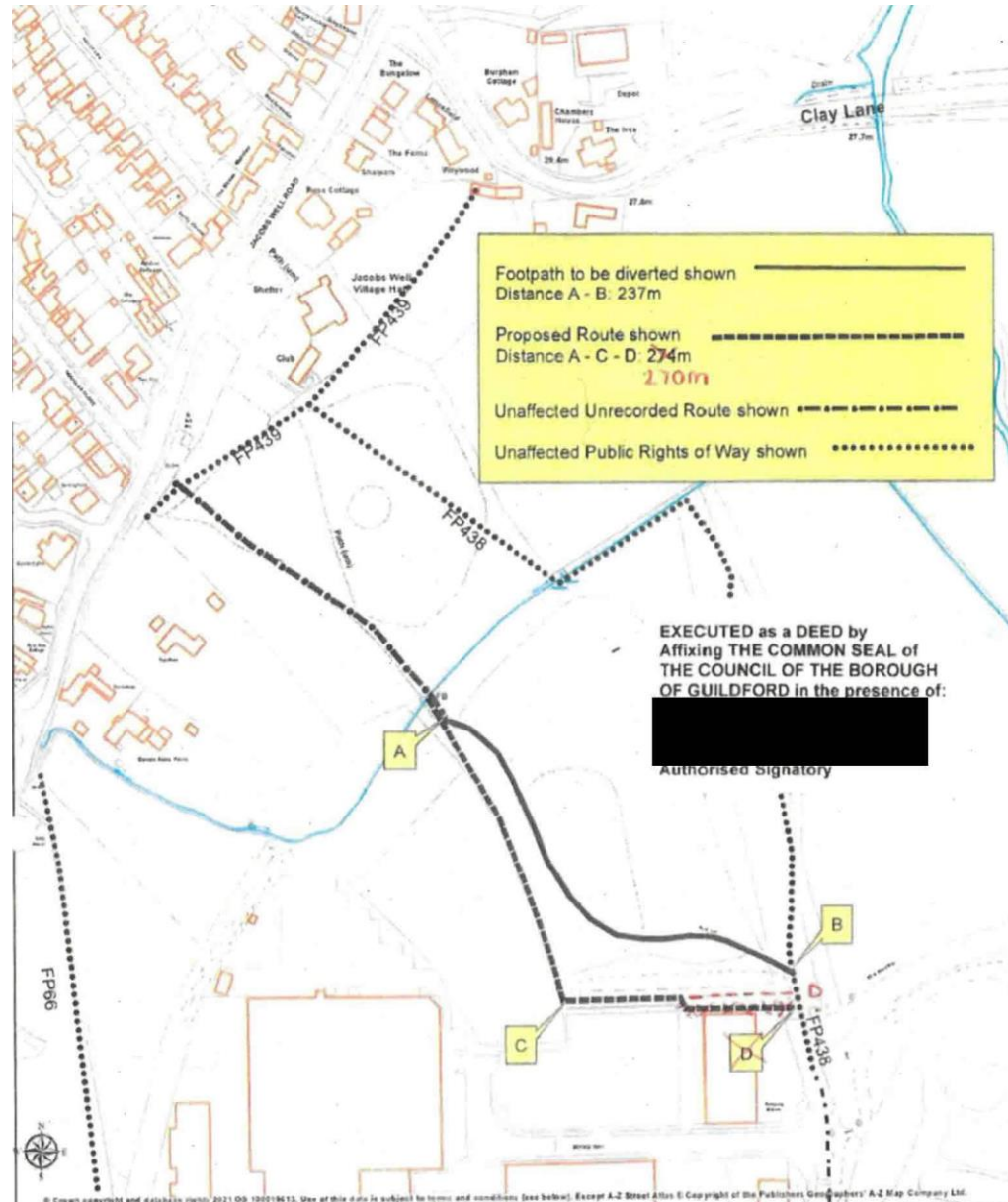
This page is intentionally left blank

21/P/01882

**North Moors Allotment Site,
North Moors, Guildford, GU1 1SE**







© Crown copyright and database right 2021 OS 100019613. Use of this data is subject to terms and conditions (see below). Except A2 Street Atlas © Copyright of the Publishers GeoInformation A2 Map Company Ltd.

SURREY
COUNTY COUNCIL

OS terms & conditions
This site provides a non-exclusive royalty free
reproducible source solely for the Licensed Data for non-commercial
purposes for the period during which Surrey County Council makes it
available. You are not permitted to copy, sublicense, distribute, sell or
otherwise make available the Licensed Data to third parties in any form.
Third party rights to enforce the terms of this licence shall be reserved to OS.

**Borough of Guildford
Parish of Worplesdon**

Grid Ref at A 31174/112B
500113 152813
Drawing No. 3/1/74/H18A
Drawn by AW 09/21
Scale 1:2500 at A4



Consented Scheme

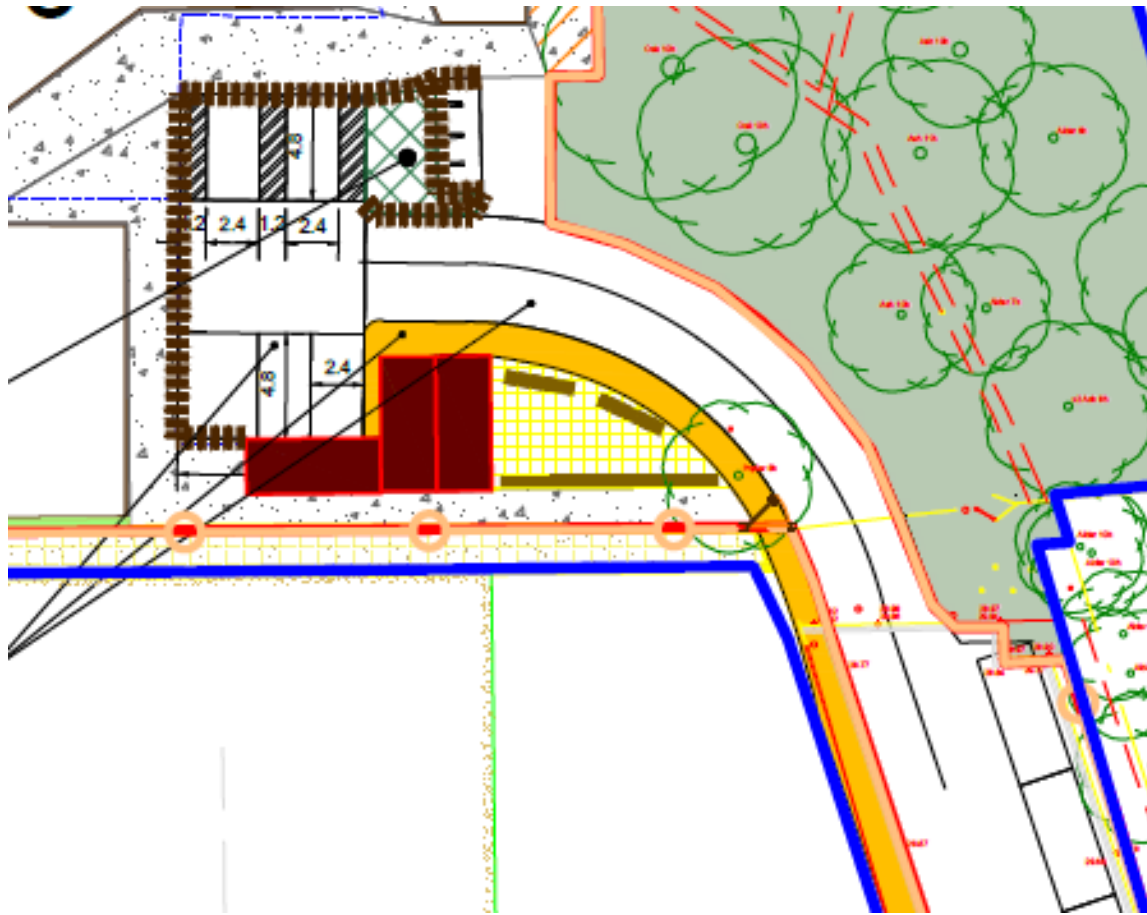


Current Application

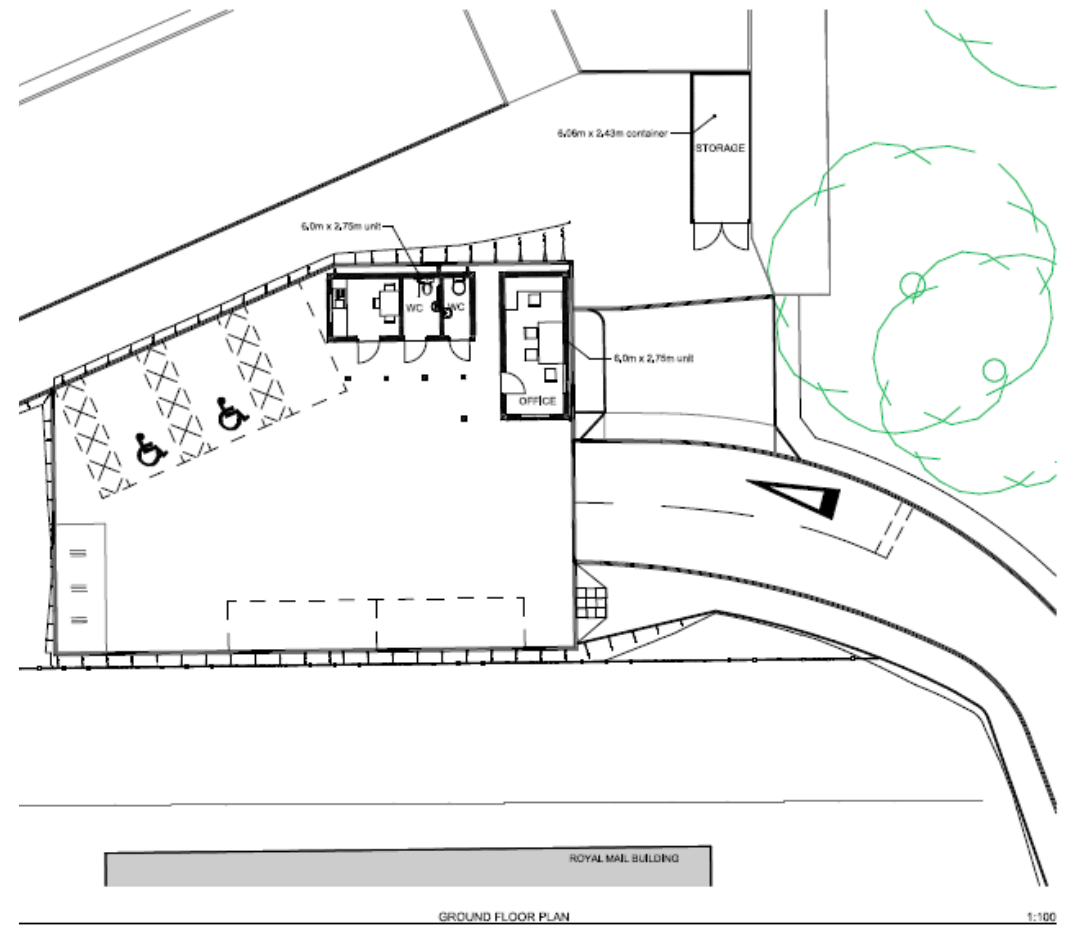


HERAS FENCING ALONG ROUTE OF PROW TO PROVIDE SECURITY FOR ALLOTMENT; NEEDS ACCESS GATES

TEMPORARY ACCESS FOR ALLOTMENT HOLDERS - DETAILS TO BE AGREED WITH CONTRACTOR



Consented Scheme



Current Application









